

高雄國際機場 KAOHSIUNG INTL AD

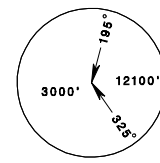
RCKH SID
TNN 1F(RWY27)

KAOHSIUNG APP 124.7 125.7	KAOHSIUNG TWR 118.7 120.7	ATIS 127.8
------------------------------	------------------------------	---------------

Apt Elev: 32' Trans Level: FL130 Trans Alt: 11,000'

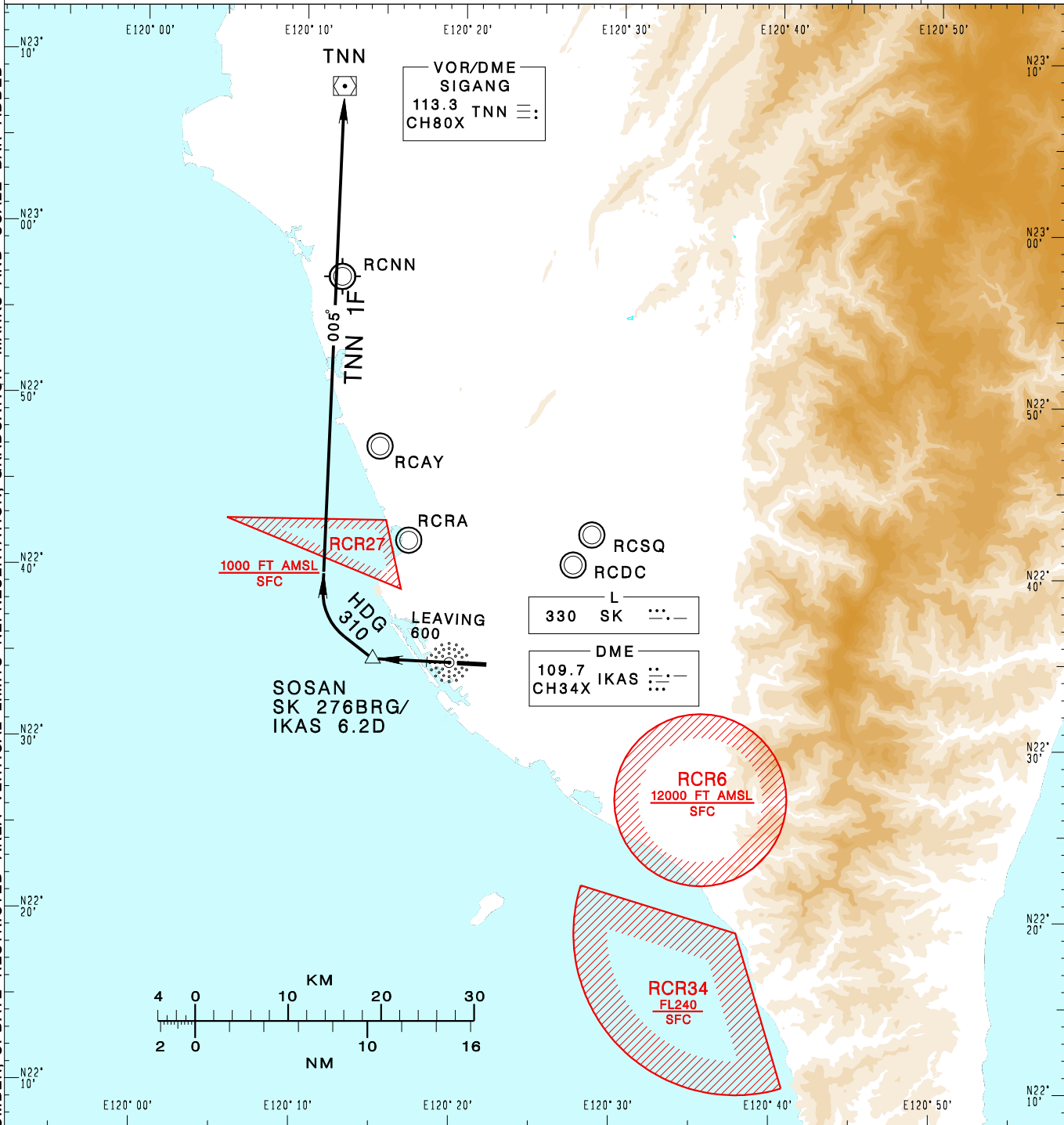
BEARINGS ARE MAGNETIC; DISTANCES ARE NAUTICAL MILES; ELEVATIONS, HEIGHTS IN FEET

VAR 4° W



MSA SK 25NM

CHANGES: NEW PAGE NUMBER, UPDATE RESTRICTED AREA, VERTICAL LIMITS, REPRESENTATION, GRADUATION MARKS AND SCALE BAR ADDED



SIGANG ONE FOXTROT DEPARTURE

Climb on RWY HDG until leaving 600ft, then track SK 276BRG to SOSAN, then turn right HDG 310 to track TNN R-185 to TNN.

NOTE

1. Minimum climb gradient required: 4%(245ft/NM) until 2,000ft.
2. Caution: pier cranes, terrain and stacks east, west and south of airport.
3. ATS surveillance required.